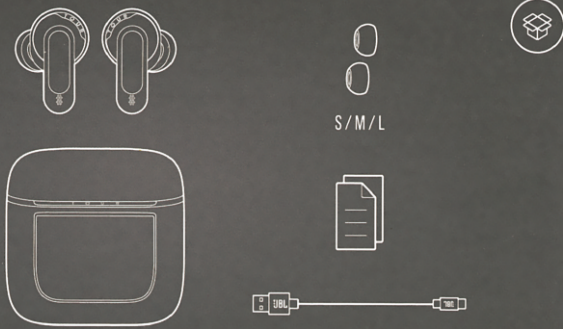




# QUICK-ACTION GUIDE

## Product list

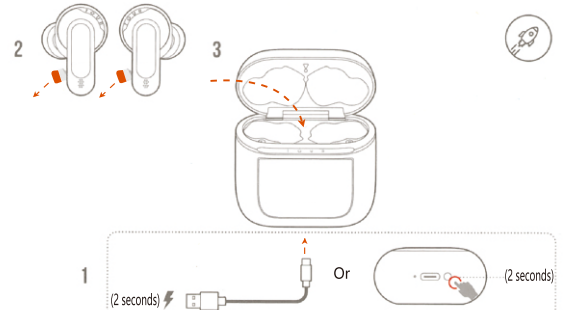


## Method of wearing

1 Try different sizes of earplugs for better fit and audio performance



## For the first time



## Open and connect

WINDOWS 10 V1803+  
MICROSOFT SWIFT PAIR

## Two-way connection+ Synchronization

Stereo mode  
Mono mode

## Touch Command

- Click once
- Click twice
- Click 3 times
- Hold it down for five seconds

Active noise reduction, Environmental awareness, Free call, Pause play, Last song, Next song, Wake up, Volume reduced, Answer the call, Voice assistant, Incoming calls are declined, Long Press 2 R, L ear, Hold for 2 seconds

Click on the left or right ear  
Double-click on the left side of the multifunction key  
Double-click on the multifunction button on the right  
Three clicks on the multifunction button on the right  
Three clicks left multifunction key  
Click on the left or right ear  
Long Press 2 R, L ear

## Touch Command

Press 1 to slide

## Auto play/pause

## Noise reduction mode

Hold it down for two seconds  
100% = 10HR

Silent mode on: Active Noise Reduction  
Silent mode off: active noise reduction

## Close

## Smart charging box settings

NOISE REDUCTION  
OFF ANC TRANS

LOCK SCREEN WALLPAPER

## Charge

## Led Indicator Light mode

- Bluetooth is connecting
- Bluetooth is connected
- Bluetooth not connected

## Open and connect

Test items	Description
Power on	Open cover automatic boot pair, (can also be manually boot long press boot key 3s)
Turn it off	Long press start key 5S or enter the warehouse to shut down
TWS self-pairing mode	First boot automatic TWS pairing
Cell phone pairing mode	Open the cover automatic boot, TWS automatic matching, active into the matching state, open the Bluetooth device search for matching name: (V8)

To extend battery life, fully charge your battery at least once every three months. Battery life varies according to usage and settings.

Product specifications and app screens are subject to change without notice.  
HP\_TOUR PRO\_2\_QSG\_XiaoWei\_CR\_V3